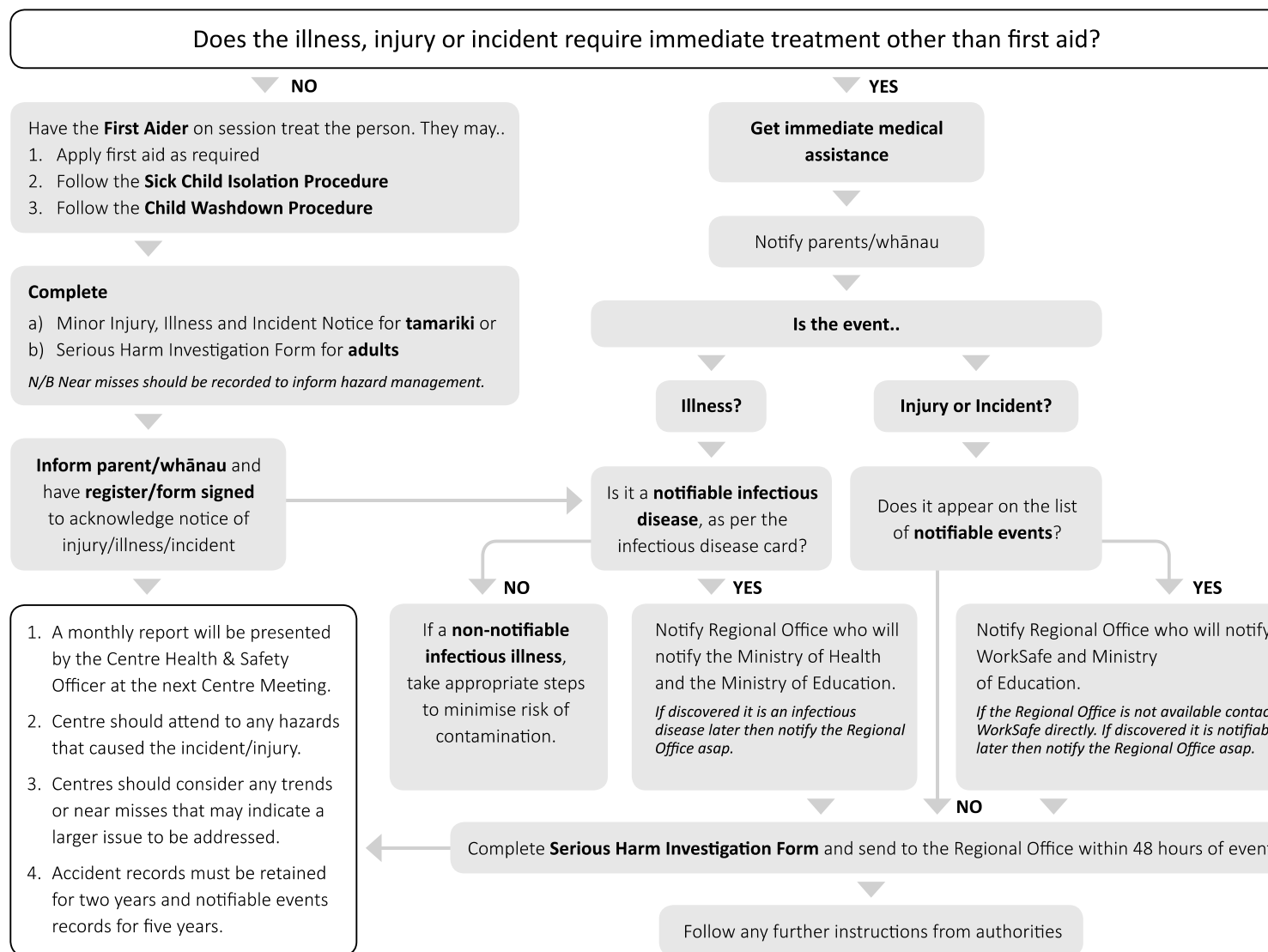


Playcentre Aotearoa's Injury, Illness and Incident Procedure (including near misses)





RESOURCES

1. Notifiable Injury/ Incidents: <http://www.legislation.govt.nz/act/public/2015/0070/52.0/DLM5976868.html>
2. Infectious Diseases for Criterion 26: <https://www.education.govt.nz/early-childhood/licensing-and-regulations/the-regulatory-framework-for-ece/licensing-criteria/centre-based-ece-services/appendix-2-infectious-diseases-for-criterion-hs26/>
3. Notifiable diseases (general): <https://www.health.govt.nz/our-work/diseases-and-conditions/notifiable-diseases>
4. Playcentre Aotearoa's Child Washdown Procedure Template
5. Playcentre Aotearoa's Sick Child Isolation Procedure Template
6. Playcentre Aotearoa's Minor Injury, Illness, Incident Notice
7. Playcentre Aotearoa's Serious Harm Investigation Form

REFERENCES

Playcentre Aotearoa's Health & Safety Policy

Playcentre Aotearoa's Injury, Illness and Injury Procedure

Playcentre Aotearoa's Child Washdown Procedure

Playcentre Aotearoa's Sick Child Isolation Procedure

