

Governance In Playcentre 2020

Governance: Information

As the Trustee Board shared in May this year, the governance tab is live on the Playcentre website (<https://www.playcentre.org.nz/member/governance/>). This has been updated and refreshed by the trustee board, who have worked hard to pull together governance information which is relevant and useful to all members of our organisation. Please note the Governance tab is in the member-only section of the website which requires a log-in to access it. Obtaining a log-in is a one-click process, and you can register here <https://www.playcentre.org.nz/member/>

The focus this year at our upcoming national hui will be connecting and bringing deeper understanding of Playcentre philosophy in practice. We plan to do this through an in-depth look at Governance in Playcentre.

Please familiarise yourself with this resource, especially the diagram explaining governance within Playcentre on the main [Governance webpage](#).

Home | Member Login | Governance

Governance

- Centres, Rōpū Māori and the Trustee Board

March 2020

Tēnā koutou centre members,

Centres and Rōpū Māori, supported by the Trustee Board, are the governors of our organisation. Being a governor comes with rights and responsibilities. As a governor your rights include having representation at national meetings and input into the strategic direction of our organisation. Your responsibility is to carry out your governance role, this includes participating in all community consultation.

Thank you for being active governors of Te Whānau Tupu Ngātahi o Aotearoa. Together we will see Playcentre thrive.

Your Trustee Board, *Avís, Ruth, Char, Michelle, Rancee, and Tiso.*

Our constitution
Te Whānau Tupu Ngātahi o Aotearoa - Playcentre Aotearoa Constitution (0.1 MB)

Our philosophy
Philosophy document A4 (0.5 MB)

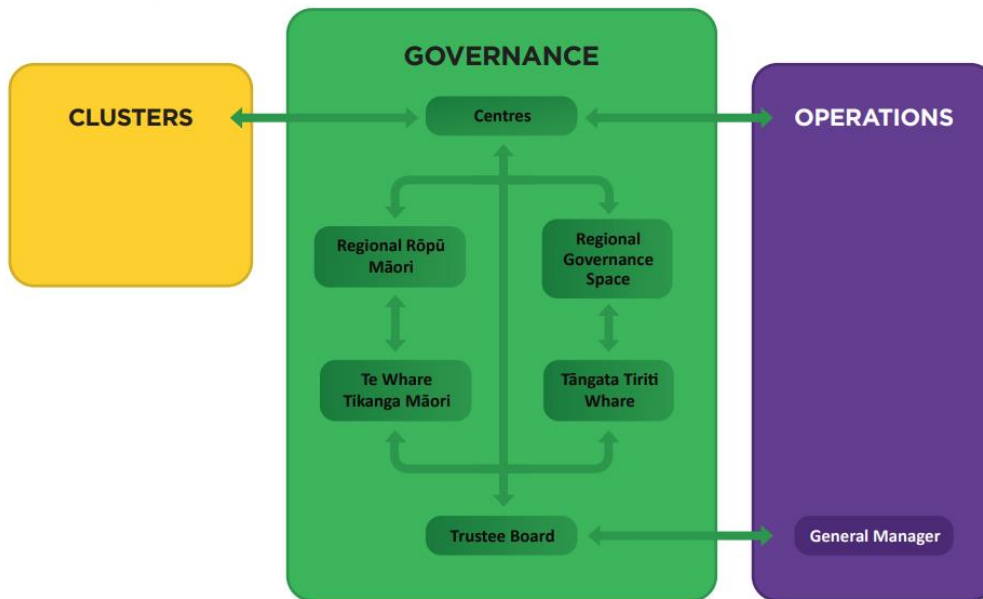
2020-2030 Strategic Plan
Strategic Plan 2020-2030 approved at Playcentre Aotearoa AGM 2020

Governance in Playcentre
Governance in Playcentre - final (0.2 MB)





Governance in Playcentre



See full descriptions on page 2

CLUSTERS

Clusters are groups of Centres supporting each other. Click here for the Cluster Toolkit (<https://www.playcentre.org.nz/wp-content/uploads/2019/01/Cluster-Toolkit-2018.pdf>). The Cluster Toolkit is currently being reviewed.

GOVERNANCE

Centres are governors in two areas. First, within their own Centres making governance decisions at their centre AGM (<https://www.playcentre.org.nz/member/governance/centre-agm/>) (e.g. setting the annual budget and the annual plan). Second, Centres are also governors of the wider Playcentre organisation and have both rights and responsibilities within the national governance framework. As a governor Centre's rights include having representation at national meetings and input into the strategic direction of Playcentre. Centre's national governance responsibilities include participating in all community consultation (for example, discussion of national AGM papers).

Regional Rōpū Māori/Regional Governance Spaces are regional spaces where representatives from Centres and rōpū within each region meet to discuss governance issues and select regional representatives to attend national meetings. These regional spaces will generally meet twice per year. Once prior to each respective whare hui, and once prior to national AGM.

Te Whare Tikanga Māori is a group of members who identify as being whānau of tamariki Māori within Playcentre Aotearoa. Te Whare Tikanga Māori only exists when they meet for national hui. The responsibilities of Te Whare Tikanga Māori are set out in clauses 7.5 & 7.6 of the constitution (<https://www.playcentre.org.nz/wp-content/uploads/2019/06/Te-Whanau-Tupu-Ngatahi-o-Aotearoa-Playcentre-Aotearoa-Constitution.pdf>). Te Whare Tikanga Māori meet twice per year. Once at hui-ā-tau Māori and once at AGM. Representatives to these meetings are selected by each regional rōpū Māori in accordance with constitutional requirements.

Tāngata Tiriti Whare is a group of Centre members or their nominated representatives with Playcentre Aotearoa. Tāngata Tiriti Whare only exists when they meet for national hui. The responsibilities of Tāngata Tiriti Whare are set out in clauses 8.3, 8.4 & 8.5 of the constitution

(<https://www.playcentre.org.nz/wp-content/uploads/2019/06/Te-Whanau-Tupu-Ngatahi-o-Aotearoa-Playcentre-Aotearoa-Constitution.pdf>). Tāngata Tiriti meet twice per year. Once at Tāngata Tiriti hui and once at AGM. Representatives to these meetings are selected by each regional governance space in accordance with constitutional requirements.

Trustee Board consists of two Co-presidents (one from each whare) and four trustees (two from each whare). The responsibilities of the Trustee Board are outlined in clause 9.4 of the constitution (<https://www.playcentre.org.nz/wp-content/uploads/2019/06/Te-Whanau-Tupu-Ngatahi-o-Aotearoa-Playcentre-Aotearoa-Constitution.pdf>). The actions of the trustee board are governed by the Playcentre Aotearoa constitution, Te Tiriti o Waitangi, relevant legislation and regulations and Playcentre Aotearoa governance policies. They work closely with the General Manager to ensure the continued success and sustainability of Playcentre. The trustee board consults with Playcentre members on governance matters.

OPERATIONS

Operations are the team of Playcentre employees led by the General Manager who deliver services and support to centres.

NATIONAL MEETINGS

There are three national meetings per year, organised by the Trustee Board, where regional representatives meet for national governance:

- Hui-ā-tau Māori
- Tāngata Tiriti Hui
- Playcentre Aotearoa Annual General Meeting (AGM)

Hui-ā-tau Māori and Tāngata Tiriti hui are where representatives from each region come together to discuss governance issues that are of importance to the respective whare and/or to the organisation as a whole.

The AGM is where representatives from the two whare meet together to receive, consider and endorse papers affecting the whole organisation as outlined in clause 10.10 of the constitution (<https://www.playcentre.org.nz/wp-content/uploads/2019/06/Te-Whanau-Tupu-Ngatahi-o-Aotearoa-Playcentre-Aotearoa-Constitution.pdf>).

