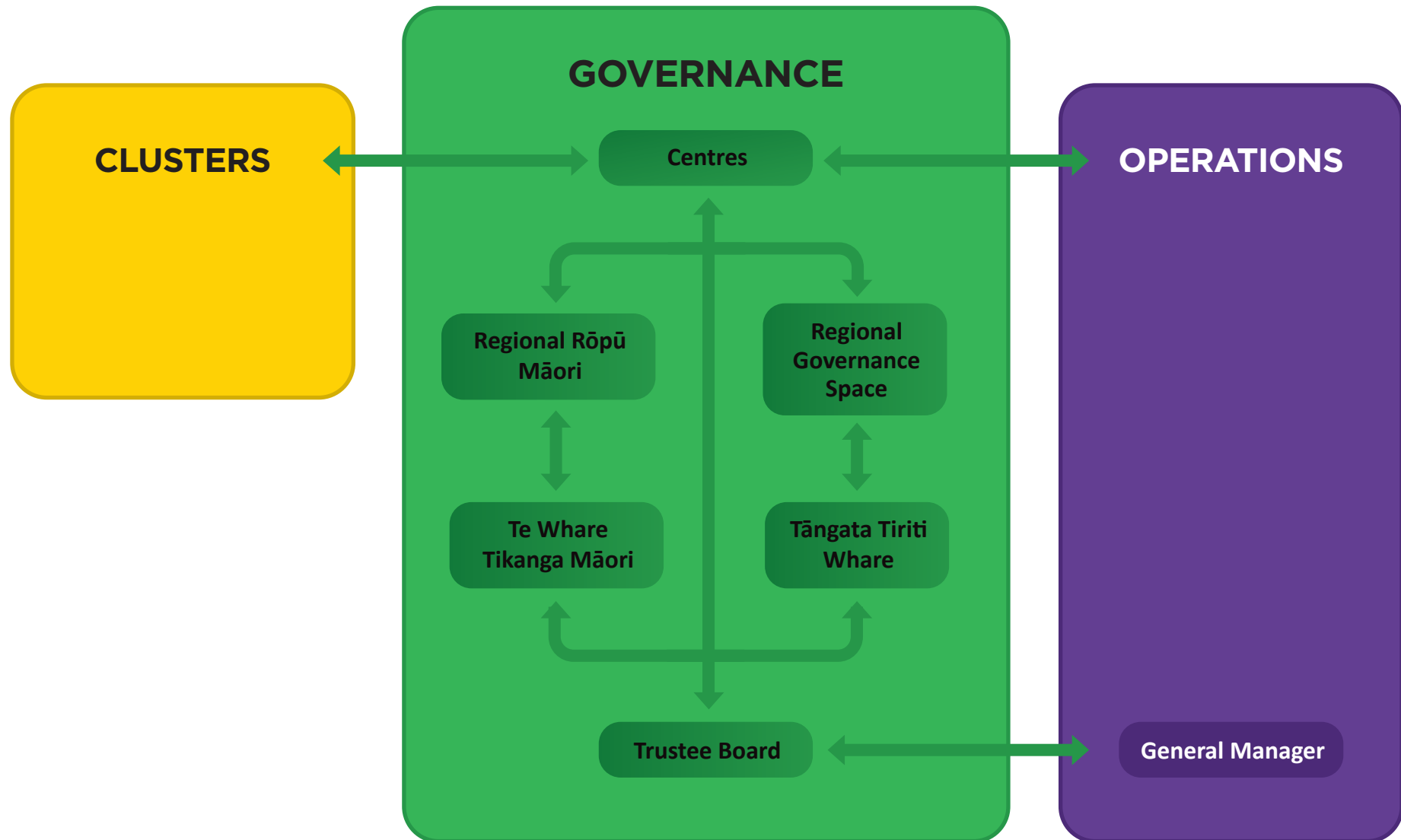




# Governance in Playcentre



See full descriptions on page 2

## CLUSTERS

Clusters are groups of Centres supporting each other. The Cluster Toolkit is currently being reviewed.

## GOVERNANCE

Centres are governors in two areas. First, within their own Centres making governance decisions at their centre AGM (<https://www.playcentre.org.nz/member/governance/centre-agm/>) (e.g. setting the annual budget and the annual plan). Second, Centres are also governors of the wider Playcentre organisation and have both rights and responsibilities within the national governance framework. As a governor Centre's rights include having representation at national meetings and input into the strategic direction of Playcentre. Centre's national governance responsibilities include participating in all community consultation (for example, discussion of national AGM papers).

**Regional Rōpū Māori/Regional Governance Spaces** are regional spaces where representatives from Centres and rōpū within each region meet to discuss governance issues and select regional representatives to attend national meetings. These regional spaces will generally meet twice per year. Once prior to each respective whare hui, and once prior to national AGM.

**Te Whare Tikanga Māori** is a group of members who identify as being whānau of tamariki Māori within Playcentre Aotearoa. Te Whare Tikanga Māori only exists when they meet for national hui. The responsibilities of Te Whare Tikanga Māori are set out in clauses 7.5 & 7.6 of the constitution (<https://www.playcentre.org.nz/wp-content/uploads/2019/06/Te-Whanau-Tupu-Ngatahi-o-Aotearoa-Playcentre-Aotearoa-Constitution.pdf>). Te Whare Tikanga Māori meet twice per year. Once at hui-ā-tau Māori and once at AGM. Representatives to these meetings are selected by each regional rōpū Māori in accordance with constitutional requirements.

**Tāngata Tiriti Whare** is a group of Centre members or their nominated representatives with Playcentre Aotearoa. Tāngata Tiriti Whare only exists when they meet for national hui. The responsibilities of Tāngata Tiriti Whare are set out in clauses 8.3, 8.4 & 8.5 of the constitution ([https://www.playcentre.org.nz/wp-content/uploads/2019/06/Te-](https://www.playcentre.org.nz/wp-content/uploads/2019/06/Te-Whanau-Tupu-Ngatahi-o-Aotearoa-Playcentre-Aotearoa-Constitution.pdf)

[WhanauTupu-Ngatahi-o-Aotearoa-Playcentre-Aotearoa-Constitution.pdf](https://www.playcentre.org.nz/wp-content/uploads/2019/06/Te-Whanau-Tupu-Ngatahi-o-Aotearoa-Playcentre-Aotearoa-Constitution.pdf)).

Tāngata Tiriti meet twice per year. Once at Tāngata Tiriti hui and once at AGM. Representatives to these meetings are selected by each regional governance space in accordance with constitutional requirements.

**Trustee Board** consists of two Co-presidents (one from each whare) and four trustees (two from each whare). The responsibilities of the Trustee Board are outlined in clause 9.4 of the constitution (<https://www.playcentre.org.nz/wp-content/uploads/2019/06/Te-Whanau-TupuNgatahi-o-Aotearoa-Playcentre-Aotearoa-Constitution.pdf>). The actions of the trustee board are governed by the Playcentre Aotearoa constitution, Te Tiriti o Waitangi, relevant legislation and regulations and Playcentre Aotearoa governance policies. They work closely with the General Manager to ensure the continued success and sustainability of Playcentre. The trustee board consults with Playcentre members on governance matters.

## OPERATIONS

Operations are the team of Playcentre employees led by the General Manager who deliver services and support to centres.

## NATIONAL MEETINGS

There are three national meetings per year, organised by the Trustee Board, where regional representatives meet for national governance:

- Hui-ā-tau Māori
- Tāngata Tiriti Hui
- Playcentre Aotearoa Annual General Meeting (AGM)

Hui-ā-tau Māori and Tāngata Tiriti hui are where representatives from each region come together to discuss governance issues that are of importance to the respective whare and/or to the organisation as a whole.

The AGM is where representatives from the two whare meet together to receive, consider and endorse papers affecting the whole organisation as outlined in clause 10.10 of the constitution (<https://www.playcentre.org.nz/wp-content/uploads/2019/06/Te-Whanau-Tupu-Ngatahi-o-Aotearoa-Playcentre-Aotearoa-Constitution.pdf>).